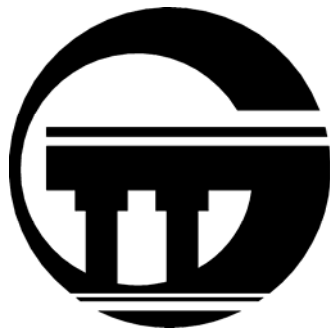




**gINT DOCUMENTATION**  
**CUSTOM FILES**  
for the  
**NORTH CAROLINA**  
**DEPARTMENT OF TRANSPORTATION**  
**GEOTECHNICAL ENGINEERING UNIT**



The information in this publication is subject to change without notice and does not represent a commitment on the part of gINT Software. The software described in this document is furnished under a license agreement or nondisclosure agreement. The software must be used or copied only in accordance with the terms of the agreement.

Printed 16 April 2007

*Disclaimer: Every effort was made to ensure accuracy. However, gINT Software makes no warranty as to the correctness of this information or the supplied files.*

All rights reserved worldwide. No part of this publication may be reproduced in any form or by any means without the prior written consent of gINT Software. Comments are welcome and become the property of gINT Software. gINT<sup>®</sup> is a registered trademark of gINT Software. All other products mentioned are trademarks or registered trademarks of the respective producers.

© Copyright 2007 by gINT Software  
Printed in the United States of America

7710 Bell Road  
Windsor, California 95492-8518  
707 838 1271  
707 838 1274 (Fax)

Web Site: [www.gintsoftware.com](http://www.gintsoftware.com)  
E-mail: [support@gintsoftware.com](mailto:support@gintsoftware.com)  
Sales: [sales@gintsoftware.com](mailto:sales@gintsoftware.com)

---

## TABLE OF CONTENTS

INTRODUCTION .....	1
INSTALLATION .....	1
UNITS.....	2
THE LOG FORMS .....	3
FENCE FORMS .....	3
SETTING UP THE PRINTER.....	3
QUICK START .....	5
SPLITTING A LOG INTO SOIL AND CORE PORTIONS .....	5
DATA COLLECTION WITH PLOG® .....	6
SAMPLES OF REPORT OUTPUT .....	6

## INTRODUCTION

The North Carolina Department of Transportation, Geotechnical Engineering Unit, worked with gINT Software to create a gINT project database structure, report forms, and symbols to meet NC DOT requirements. These files will work with gINT version 7 and later. If you have an older version and wish to use these files, please contact the sales department of gINT Software for upgrade information.

To ensure that the files are consistent across all organizations using them, both the NC DOT and their consultants, **NO CHANGES ARE TO BE MADE TO THEM** except for changes to the lookup lists to reflect your organization's information. The NC DOT requires that the project and library structures to be left as-is. Please direct all requests for modifications to Dennis Li ([dgli@dot.state.nc.us](mailto:dgli@dot.state.nc.us); 919 250 4088). Please do not request assistance from gINT Software for modifications. We will not make any that are not authorized by the NC DOT.

These files and documentation are provided as-is and gINT Software assumes no responsibility or liability for their use. Please contact gINT Software technical support if there are technical difficulties with these files.

## INSTALLATION

Although the files can be installed to any folder, they will be easiest to locate under the following folders:

File	Description	Storage Folder
NC_DOT.GLB	Contains all forms, symbols, lookup list, etc. Basically everything except your project database structure and data. DO NOT try to merge this file into your normal library. It is best to keep the NC DOT library objects separate from your own.	Probably best to store it in the same folder as your usual library.*
NC_DOT.GPJ	A sample gINT project from which the sample output was generated.	Store in your default gINT project folder.*
NC_DOT.GDT	The data template used to create new projects.	Store in your gINT data template folder.*

\*See the **File** ► **System Properties** dialog anywhere in the program.

A simple way to move the files to the folders given above, is to use the **Utilities** ► **Extract from ZIP** application in gINT.

---

On working on an NC DOT project, you need to switch libraries to the NC\_DOT.GLB. Do this with **File ► Change Library** anywhere in the program and switch back to your usual library with the same method.

## UNITS

All the forms are set up to accept data entry in either English or Metric units and can be outputted in either English or Metric units. Specify your input units in the **Input Units** field of the PROJECT table (the default is English) and the output units in the **Output Units** field, also in the PROJECT table (the default is English). You can change the **Output Units** at any time. The **Input Units** must initially be correct, or you have to re-enter your data.

**IMPORTANT NOTE:** Unit-sensitive data embedded within text must be input in the **Output Units** and are not converted. For example, if you type "grades sandier below 5 feet" and select the Metric output, the text is not changed.

## THE LOG FORMS

We have created the following log forms as per the NC DOT specifications.

LOG REPORT	DESCRIPTION
NCDOT BORE SINGLE	NCDOT Boring Log: One log sheet per 8½x11" page
NCDOT BORE DOUBLE	NCDOT Boring Log: Two log sheets per 11x17" page
NCDOT CORE SINGLE	NCDOT Core Boring Log: One log sheet per 8½x11" page
NCDOT CORE DOUBLE	NCDOT Core Boring Log: Two log sheets per 11x17" page

## FENCE FORMS

We have created the following fence report forms.

FENCE REPORT	DESCRIPTION
NCDOT PRINTER	Printer version
NCDOT DXF EXPORT	Version for DXF Export

Go to [Help](#) ► [Contents](#) ► [Reports](#), and click the [Fences](#) topic for more details on working with fences. We have also included a site map on the top and bottom of the 3D view. The INPUT application group has a [Site Map](#) tab for drawing and/or importing the graphics. For more information on site maps, select [Help](#) ► [Search for Help On...](#) and enter "Site Map" in the text box.

## SETTING UP THE PRINTER

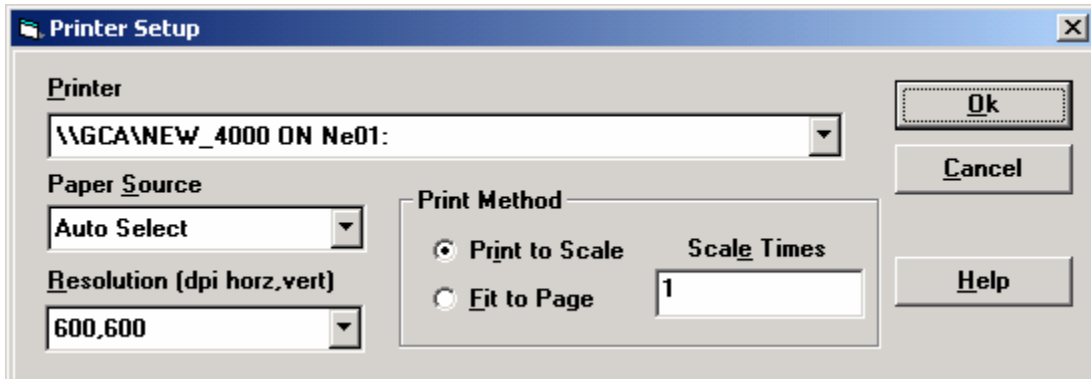
With gINT, each report stores the printer it will output to. Initially, the forms have been configured to work with the following printers:

- 8½x11" forms work with an HP LaserJet (most models)
- 11x17" forms work with an HP DeskJet 1220C

When you use these forms for the first time, and do not have these printers installed, the program automatically substitutes your default Windows printer. If you wish to output the forms to your default printer, you do not need to make any changes. If not, you must change the printer associated with one or more forms.

To change your default printer:

1. Open gINT and go to the REPORTS application group. Select the appropriate report tab (Logs, Fences, and so on).
2. Select the File ► Print ► Printer Setup menu option. You see the Printer Setup dialog box:



3. Select the appropriate printer and click OK. If you have multiple forms in a report style, change the current report by clicking the drop-down "object selector" text box at the top of the window, selecting another report, and repeating the above steps.



Changing the printer in the REPORTS application stores the setting. You can also change the printer at output time using the same steps, but any changes made during output time, are only in effect for the currently selected report and revert back to the value set in REPORTS when the current report is closed.

## QUICK START

Use the following process to generate a report. Remember to change to the NC\_DOT.GLB library when working on an NC DOT project (File ► Change Library).

1. Open the INPUT application group, and select File ► New Project ► Clone Data Template.
2. Select a data template from the Clone From... dialog box. A data template file stores the structures needed to create a project database. Select the NC\_DOT.GDT data template.
3. The program prompts you for a project file name. The program automatically adds the .GPJ extension.
4. After naming the project, you see a series of tabbed screens, one tab for each section (called a "table") in the database. Enter information in the tabs as you would a standard Windows spreadsheet.

**Note:** If you are unclear on the meaning of a field, help text may be displayed on the lower portion of the screen. Another resource is the **Table Help** button located on the upper right corner of the screen, which sometimes provides additional information. After completing the data input, click the OUTPUT application group button.

5. Click the appropriate OUTPUT application (logs, fences, graphs, and so on) and select a report from the drop-down list on the upper left portion of the window.



6. Click the print button , and then click **OK** in the Print Specifications dialog box.

We have provided the sample project NC\_DOT.GPJ. The sample project was used to generate the sample output. You can open this project in the INPUT application, observe how the input was completed, and compare it to the sample output.

## SPLITTING A LOG INTO SOIL AND CORE PORTIONS

You can split a log between the soil and core logs. The soil log will print all the data down to the bottom of the hole, including the core depths. The only exception is that the data in Corelog Description field in the LITHOLOGY table will only print on the core log, not on the soil log. By default, the core log will start output at the first depth in the CORE RUN table. This can be overridden with any value provided in the Override Start of Core Log Depth field in the CORE table.

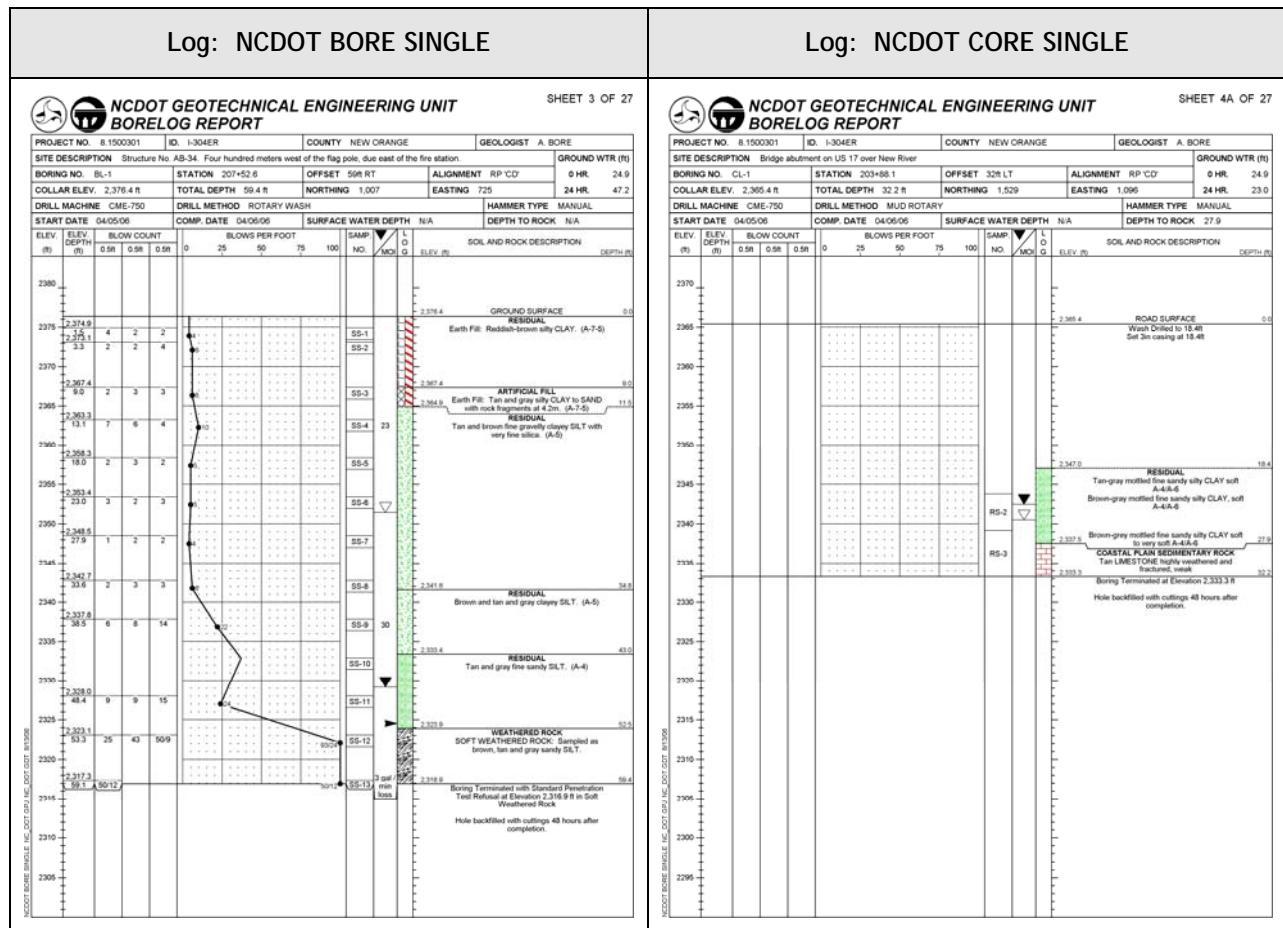
Using the example project provided (NC\_DOT.GPJ), print out BL-1 and BL CL-1 with the soil log form and CL-1 and BL CL-1 using the core form. BL-1 and CL-1 are each print totally on one form. BL CL-1 prints its data (except the core run descriptions) on the soil log and all the data starting at the depth of the first core run on the core log.

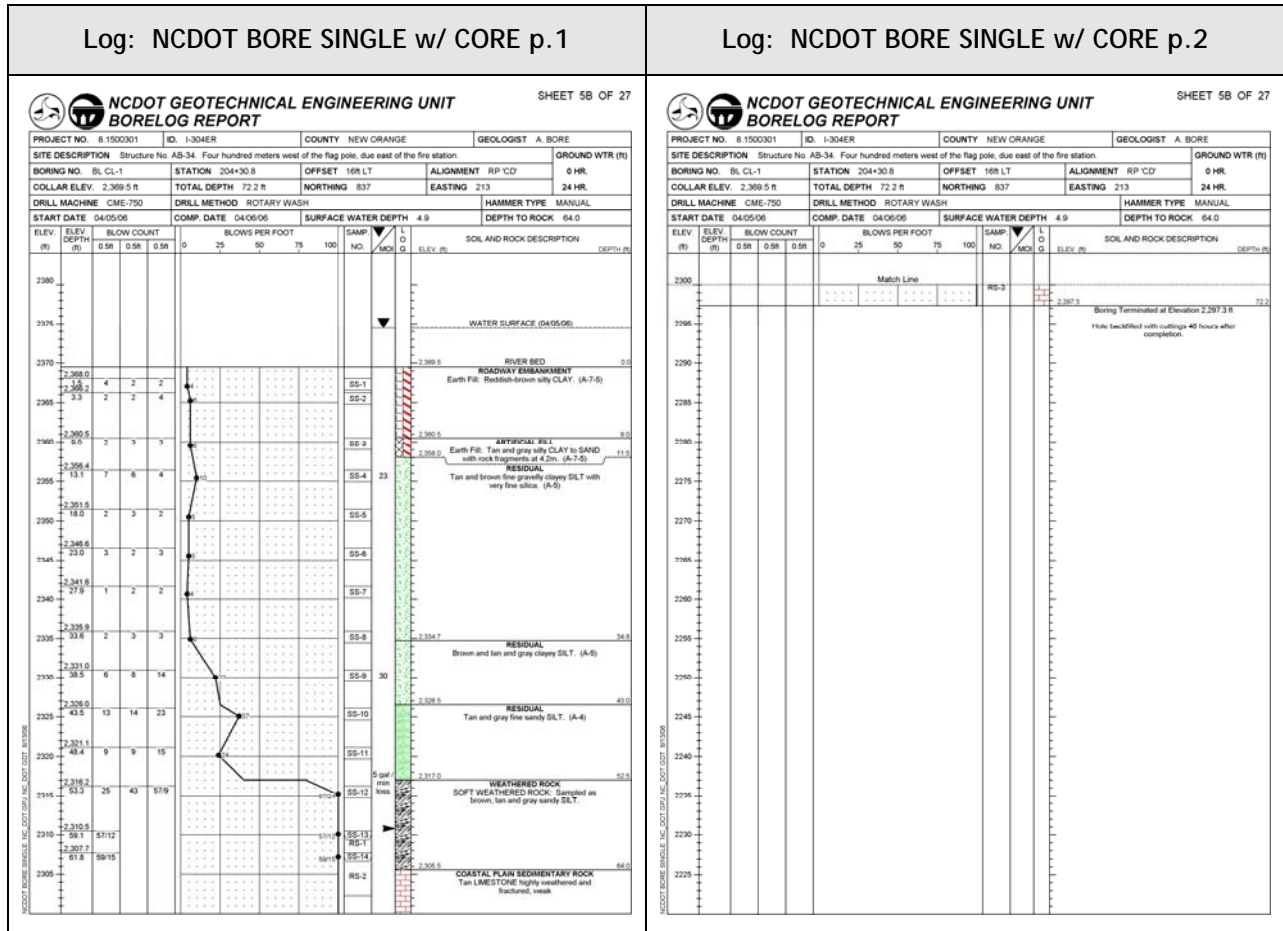
## DATA COLLECTION WITH PLOG®

PLog is a PDA-based program for collection of field data written by Dataforensics of Atlanta (www.dataforensics.net). The data from PLog can be imported into gINT projects. We have supplied a gINT import correspondence file (nc\_dot\_plog.gci) to perform the mapping between the PLog database structure and the gINT NC DOT project structure. So if you use PLog for your field data collection, you can import directly into an NC DOT project. Note that this correspondence file will only work with the NC DOT structure.

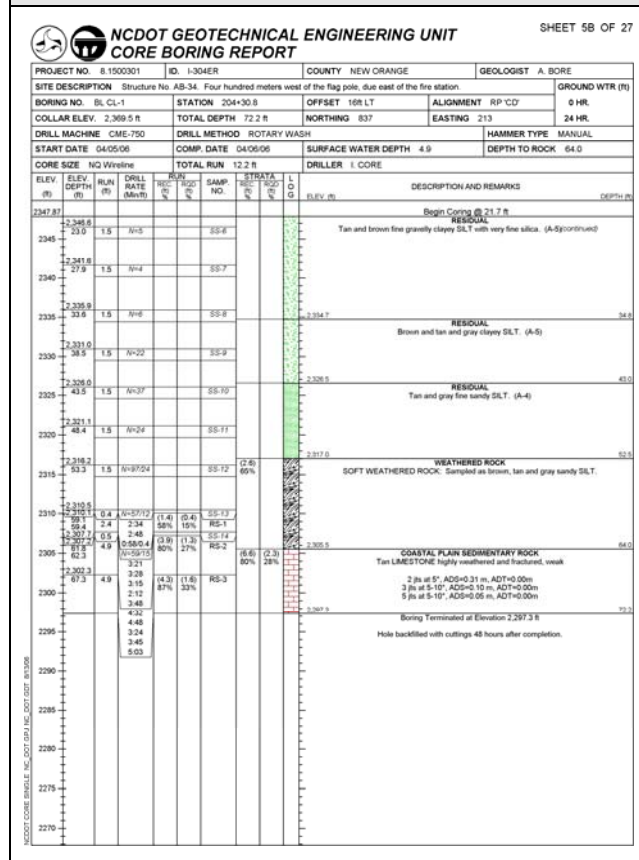
## SAMPLES OF REPORT OUTPUT

(doubled versions of the bore and core logs, and the DXF version of the fence are not shown)

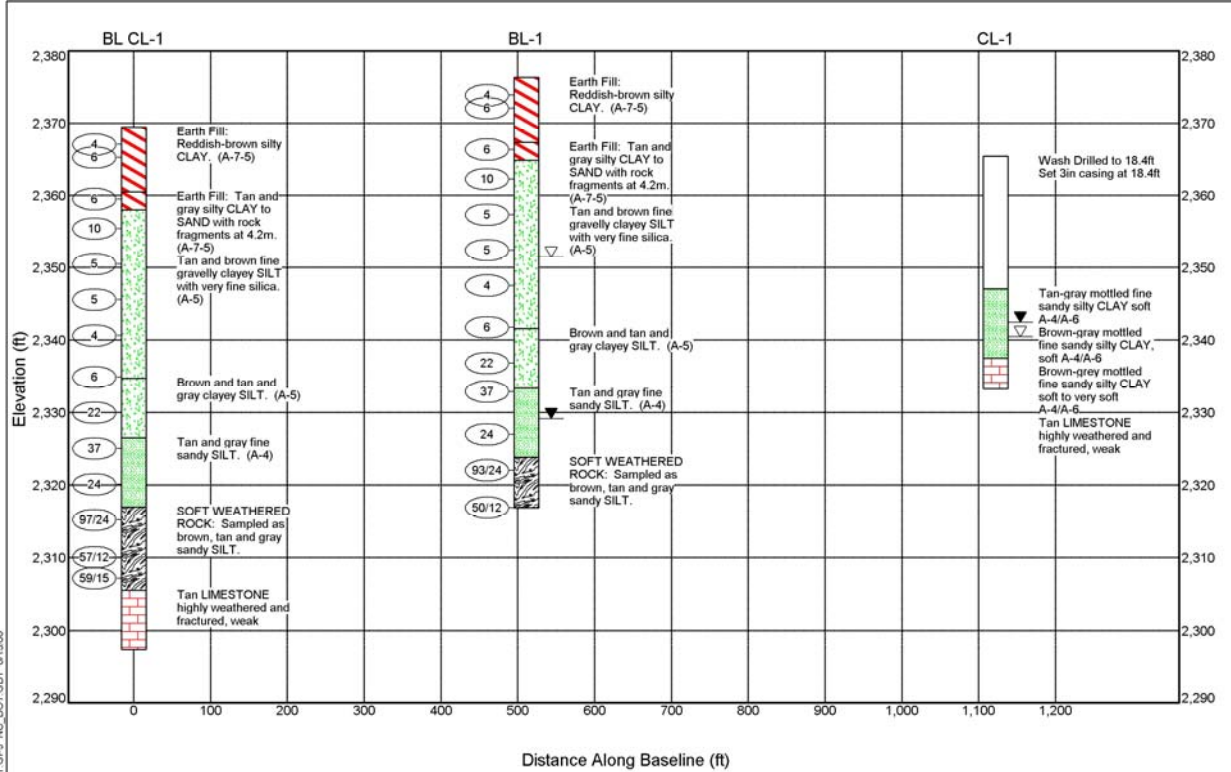




Log: NCDOT CORE SINGLE continued from BORE



Fence: NCDOT PRINTER (2D view)

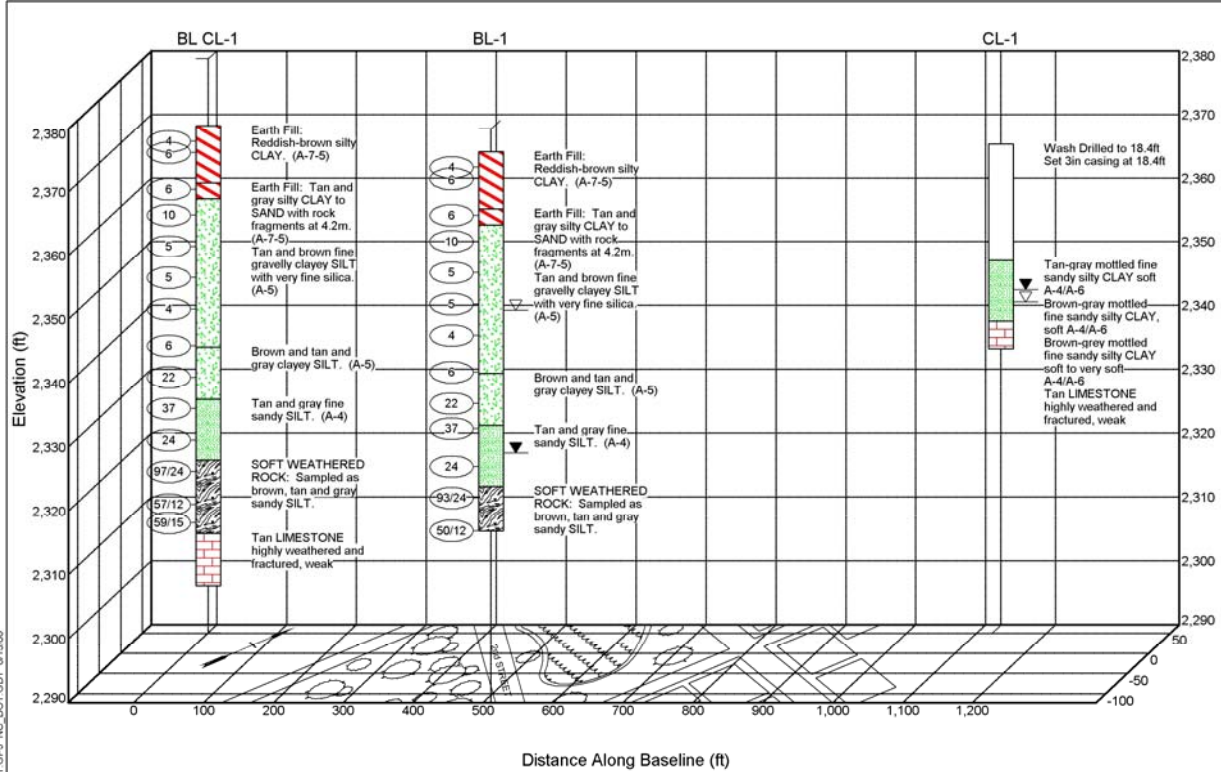


NCDOT PRINTER NC\_DOT\_GPJ\_NC\_DOT\_GDT\_8/13/08

**NCDOT GEOTECHNICAL ENGINEERING UNIT**  
**BORELOG REPORT**

**PROJECT NO.** 8.1500301  
**ID.** I-304ER  
**COUNTY** NEW ORANGE

Fence: NCDOT PRINTER



NCDOT PRINTER NC\_DOT\_GPJ\_NC\_DOT\_GDT\_8/13/06

**NCDOT GEOTECHNICAL ENGINEERING UNIT**  
**BORELOG REPORT**

**PROJECT NO. 8.1500301**  
**ID. I-304ER**  
**COUNTY NEW ORANGE**