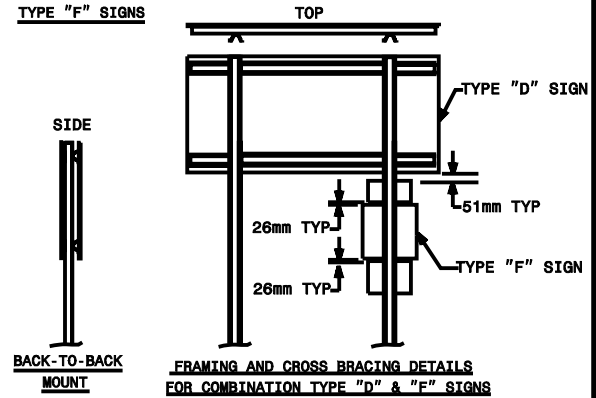
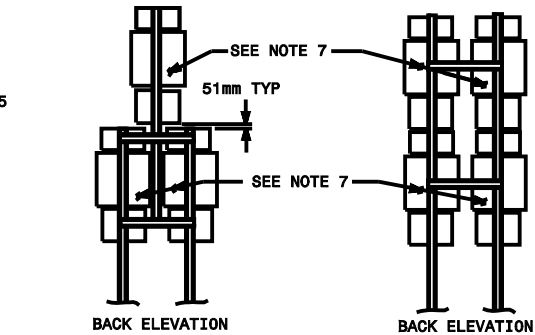
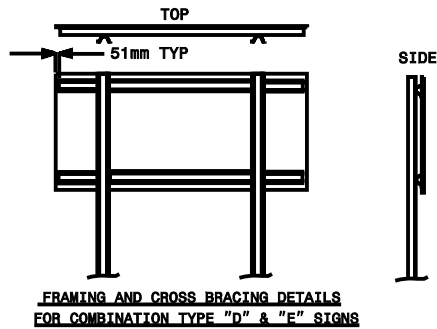
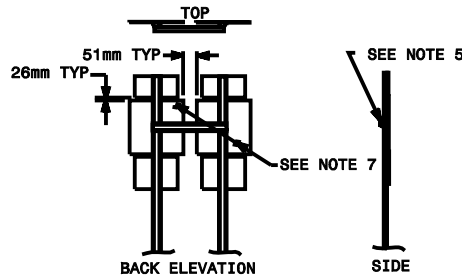


TYPICAL SIGN SHAPES AND COMBINATIONS

Note:
This drawing is dimensioned in millimeters unless otherwise depicted within the drawing.



NOTES:

1. ERECT TYPE "D", "E", AND "F" SIGNS ON FREEWAYS WITH THE NEAR EDGE OF THE SIGN 8.10M FROM THE TRAVEL LANE. ERECT ALL OTHER "D", "E", AND "F" SIGNS WITH THE NEAR EDGE OF THE SIGN AT THE EDGE OF THE SHOULDER BREAK (1.83M MINIMUM CLEARANCE, 3.65M DESIRABLE, FROM THE EDGE OF TRAVEL LANE), OR AS DIMENSIONED ON PLAN SHEETS.
2. ERECT TYPE "D", "E", AND "F" SIGNS WITH THE BOTTOM OF SIGN ASSEMBLY AT LEAST 2.13M ABOVE THE EDGE OF THE TRAVEL LANE ON ROADS WITH 2 OR MORE LANES AND AT LEAST 1.52M ON OTHER ROUTES. THE VERTICAL CLEARANCE IS 2.13M, WHERE REQUIRED FOR PEDESTRIAN TRAFFIC AND/OR PARKED VEHICLES.
3. THE VERTICAL DIMENSION BETWEEN MOUNTING HOLE CENTERS ON ALL TYPES "D", "E", AND "F" SIGNS IS 762mm MAXIMUM. THE VERTICAL AND HORIZONTAL DIMENSIONS BETWEEN MOUNTING HOLES MUST BE MULTIPLES OF 25.4mm. EACH SIGN PANEL HAS A MINIMUM OF 2 BOLTS PER SUPPORT.
4. ATTACH SIGN W/ 8mm HEX. HEAD BOLT, NYLON WASHER, SHIM, FLAT WASHER, LOCK WASHER, HEX. NUT. NO BUCKLING OF THE SIGN WILL BE PERMITTED. SEE ASSEMBLY DETAIL SHEET #2 OF 904.50.
5. FURNISH AND INSTALL CROSS-BRACING AS SHOWN IN DETAIL. PAINT ENDS OF CROSS BRACES W/ APPROV. ZINC PAINT.
6. INSTALL POST AND CROSS-BRACING WITH THE WIDE SIDE OF THE FLANGE TOWARD THE BACK OF SIGN(S) FOR COMBINATION TYPE "D" AND "F" SIGNS.
7. THE SHEILD HEIGHTS IN THESE ASSEMBLIES CAN NOT BE LARGER THAN 800mm.