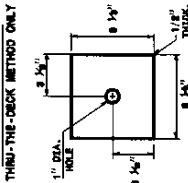
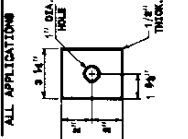


DECK & BARRIER WASHERS

DECK WASHER
THRU-THE-DECK METHOD ONLY

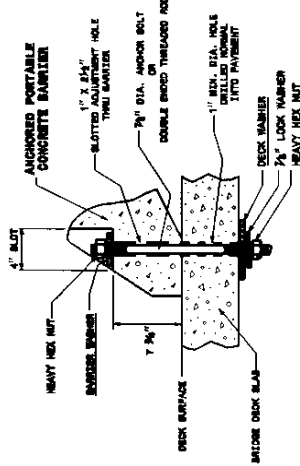


BARRIER WASHER
ALL APPLICATIONS

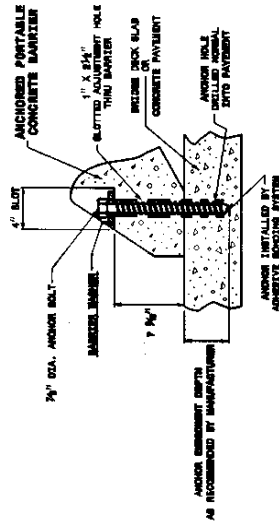


THRU-THE-DECK ANCHOR METHOD

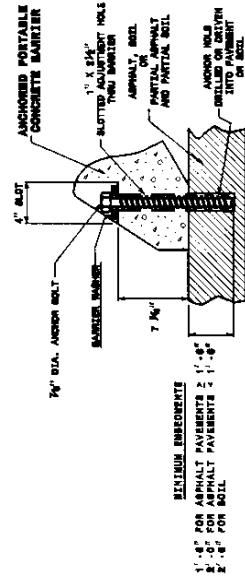
METHOD TO BE USED ON OLD BRIDGE DECKS WHICH WERE NOT DESIGNED FOR THE PLANS, OR WHEN DIRECTED BY THE ENGINEER.



ADHESIVE BONDING SYSTEM ANCHOR METHOD
BRIDGE DECKS AND PORTLAND CEMENT CONCRETE PAVEMENTS



ANCHOR BOLT METHOD
SITUATION PAVEMENTS & SOILS



NOTE:
THESE EMBEDMENT DEPTHS ARE TYPICAL FOR MOST APPLICATIONS. HOWEVER, DUE TO VARYING SOIL AND ASPHALT CONDITIONS, THEY MAY NOT BE ADEQUATE FOR ALL CASES.

GENERAL NOTES

- EACH 10 FT. SECTION OF BARRIER REQUIRES 2 ANCHOR ASSEMBLIES WHEN INSTALLED ON CONCRETE, AND 4 ANCHOR ASSEMBLIES WHEN INSTALLED ON ASPHALT OR SOIL.
- EXPANSION ANCHORS WILL NOT BE PERMITTED FOR USE ON BRIDGE DECKS.
- DO NOT DRILL HOLES INTO PRESTRESSED CONCRETE BRIDGE DECK PANELS.
- USE ASTM A328 HIGH STRENGTH GALVANIZED ANCHOR BOLTS.
- DRILL ANCHOR HOLES IN CONCRETE WITH A PNEUMATIC DRILL.
- FOR BARRIER SECTIONS THAT EXTEND ACROSS CONCRETE JOINTS, DO NOT ANCHOR ON BOTH SIDES OF THE JOINT, OMIT THE ANCHOR CLOSEST TO THE JOINT.
- TIGHTEN ANCHORS "SHOUD TIGHT". TURN THREADED RODS AT LEAST 1 FULL OF THREADS EXTENDING ABOVE THE NUT.
- COAT ANCHORS USED WITH THE ADHESIVE BONDING ANCHORING SYSTEM WITH A DEBONDING AGENT SO THE ANCHORS CAN BE EASILY REMOVED. DO NOT REDUCE THE STRENGTH OF THE ANCHOR SYSTEM WITH THE DEBONDING AGENT.
- ONCE REMOVED, COMPLETELY FILL ANCHOR HOLES WITH AN APPROVED, NON-SHRINK, NON-METALLIC GROUT, OR AS DIRECTED BY THE ENGINEER.