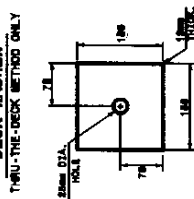
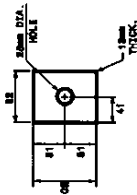


DECK & BARRIER WASHERS

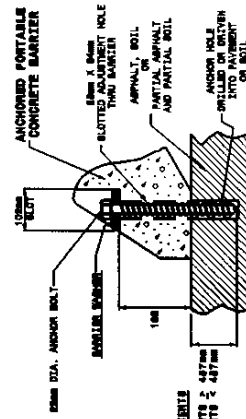
DECK WASHER
THRU-THE-DECK METHOD ONLY



BARRIER WASHER
ALL APPLICATIONS



ANCHOR BOLT METHOD
BITUMINOUS PAVEMENTS & SOILS



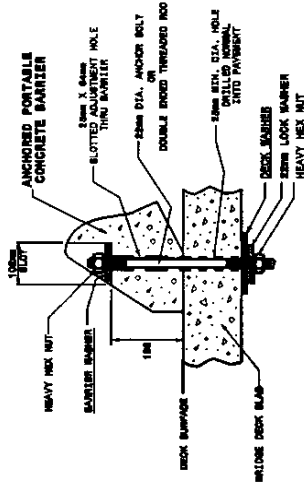
MINIMUM EMBEDMENT DEPTHS
427mm FOR ASPHALT PAVEMENTS & 487mm FOR SOIL

NOTE: THESE EMBEDMENT DEPTHS ARE TYPICAL FOR MOST APPLICATIONS. HOWEVER, DUE TO VARYING SOIL AND ASPHALT CONDITIONS, THEY MAY NOT BE ADEQUATE FOR ALL CASES.

Note:
This drawing is dimensioned in millimeters unless otherwise depicted within the drawing.

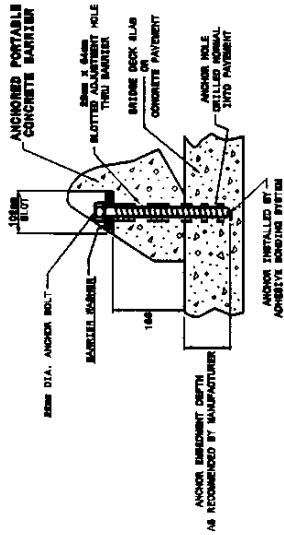
THRU-THE-DECK ANCHOR METHOD

BRIDGE DECKS
METHOD TO BE USED ON OLD BRIDGE DECKS ONLY AT TIMES WHEN SPECIFIED IN THE PLANS, OR WHEN DIRECTED BY THE ENGINEER.



ADHESIVE BONDING SYSTEM ANCHOR METHOD

BRIDGE DECKS AND PORTLAND CEMENT CONCRETE PAVEMENTS



GENERAL NOTES

- EACH 3.048M SECTION OF BARRIER REQUIRES 2 ANCHOR ASSEMBLIES WHEN INSTALLED ON CONCRETE, AND 4 ANCHOR ASSEMBLIES WHEN INSTALLED ON ASPHALT OR SOIL.
- EXPANSION ANCHORS WILL NOT BE PERMITTED FOR USE ON BRIDGE DECKS.
- DO NOT DRILL HOLES INTO PRESTRESSED CONCRETE BRIDGE DECK PANELS.
- USE ASTM A563 HIGH STRENGTH GALVANIZED ANCHOR BOLTS.
- DRILL ANCHOR HOLES IN CONCRETE WITH A PNEUMATIC DRILL.
- FOR BARRIER SECTIONS THAT EXTEND ACROSS CONCRETE JOINTS, DO NOT ANCHOR ON BOTH SIDES OF THE JOINT, ONLY THE ANCHOR CLOSEST TO THE JOINT.
- TIGHTEN ANCHORS "SNUG TIGHT". TURN THREADED RODS AT LEAST 1 FULL OF THREADS EXTENDING ABOVE THE NUT. DO NOT PROTRUDE THE TOP OF THE ANCHOR ABOVE THE SIDE OF THE BARRIER.
- COAT ANCHORS USED WITH THE ADHESIVE BONDING ANCHORING SYSTEM WITH A DEBONDING AGENT SO THE ANCHORS CAN BE EASILY REMOVED. DO NOT REDUCE THE STRENGTH OF THE ANCHOR SYSTEM WITH THE DEBONDING AGENT.
- ONCE REMOVED, COMPLETELY FILL ANCHOR HOLES WITH AN APPROVED, NON-SHRINK, NON-METALLIC GROUT, OR AS DIRECTED BY THE ENGINEER.