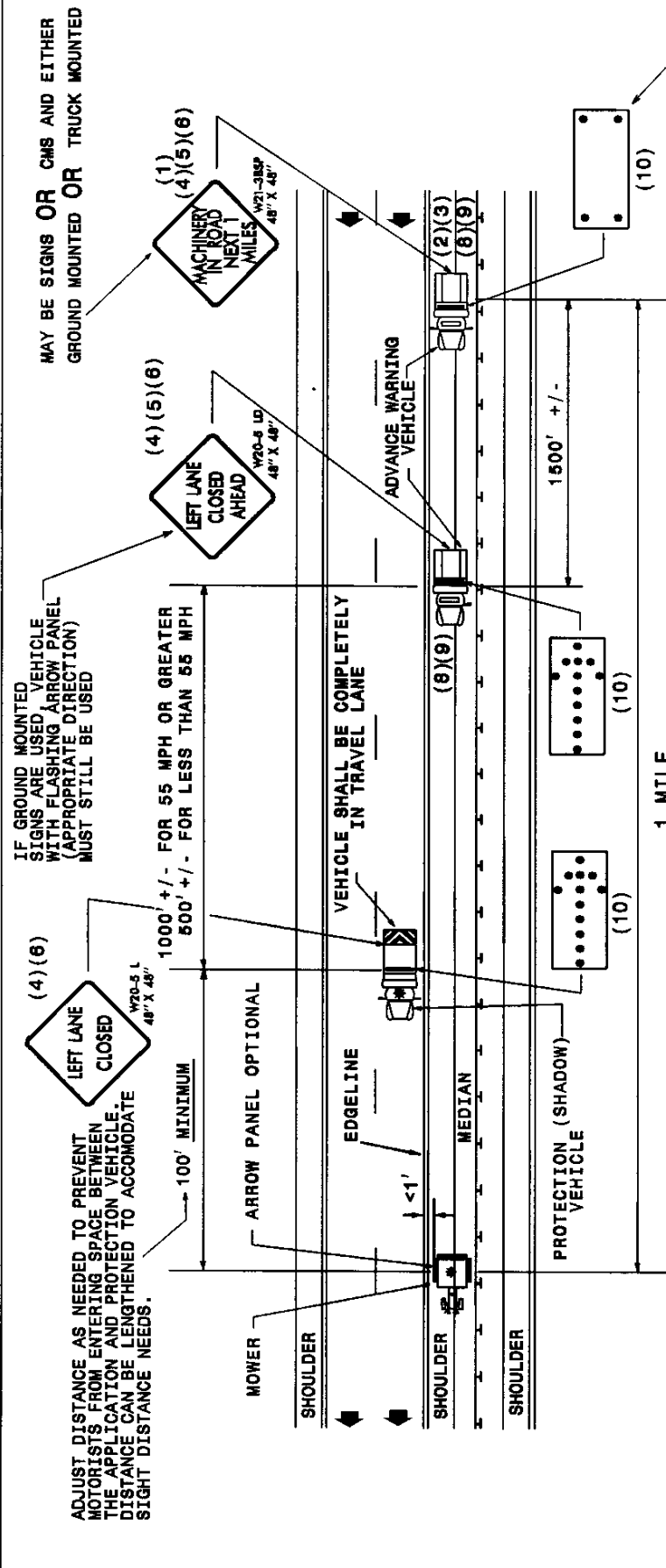


GENERAL NOTES

- (1) THE FOLLOWING OPTIONS MAY BE USED AS THE FIRST ADVANCE WARNING THE MOTORISTS SEES:
 - A. TRUCK MOUNTED ADVANCE WARNING SIGNS
 - B. MOVING CHANGEABLE MESSAGE SIGN (CMS)
 - C. GROUND MOUNTED ADVANCE WARNING SIGNS (MUST USE 'NEXT 10 MILES' AND MAKE CIRCLE TO PICK UP SIGNS)
 - D. STATIONARY CHANGEABLE MESSAGE SIGN (CMS) (MUST USE 'NEXT 10 MILES' AND MAKE CIRCLE TO PICK UP CMS)
- (2) TOTAL DISTANCE BETWEEN FIRST AND LAST VEHICLE IN CARAVAN SHOULD NOT EXCEED ONE (1) MILE IN LENGTH.
- (3) IF USING GROUND MOUNTED ADVANCE WARNING SIGNS OR STATIONARY CMS, THE TOTAL DISTANCE BETWEEN THE FIRST ADVANCE WARNING SIGN OR CMS AND APPLICATION VEHICLE SHOULD NOT EXCEED 10 MILES AND SIGN W21-3BSP SHOULD READ 'MACHINERY IN ROAD NEXT 10 MILES'.
- (4) SIGNS ON VEHICLES SHOULD BE MOUNTED A MINIMUM OF ONE (1) FOOT FROM THE GROUND AND SHOULD NOT BLOCK THE MOTORIST'S SIGHT OF THE FLASHING ARROW PANEL AND/OR LIGHT BAR.
- (5) GROUND MOUNTED SIGNS MUST BE MOUNTED A MINIMUM OF FIVE (5) FEET FROM THE GROUND TO THE BOTTOM OF THE SIGN.
- (6) SIGN W20-5L SHOULD BE PLACED ON BACK OF PROTECTION VEHICLE AND SIGN W20-LD ON BACK OF ADVANCE WARNING VEHICLE IN MULTILANE DIVIDED TRAFFIC SO VEHICLES APPROACHING FROM REAR ARE NOTIFIED OF OPERATION
- (7) RADIO COMMUNICATION BETWEEN VEHICLES IS RECOMMENDED.
- (8) USE A LIGHT BAR OR ROTATING BEACON ON THE ADVANCE WARNING VEHICLES.
- (9) USE OF CMS'S ARE OPTIONAL WITH ADVANCED WARNING VEHICLES.
- (10) USE A TYPE "B" FLASHING ARROW PANEL. MIN. SIZE 80" X 30"

LEGEND

- ▲ CONE
- Ⓚ PORTABLE SIGN
- ☛ WORKING VEHICLE WITH LIGHT BAR
- ☛ PROTECTION VEHICLE WITH TRUCK MOUNTED IMPACT ATTENUATOR (TMA) LIGHT BAR (SEE RD NO. 1108.01)
- ☛ ADVANCE WARNING VEHICLE WITH LIGHT BAR
- ☛ FLASHING ARROW PANEL, TYPE "B"
- ☛ FLASHING ARROW PANEL, TYPE "B" - CAUTION MODE
- ☛ FLASHING ARROW PANEL, TYPE "B" - APPROPRIATE DIRECTION INDICATED



MOWING OPERATION

INTERSTATE AND MULTILANE DIVIDED FACILITIES IN AREAS WITH LIMITED SHOULDER AND GUARDRAIL

LOCATION: MEDIAN WITH TIRE OF MOWING VEHICLE CLOSER THAN ONE (1) FOOT TO EDGE LINE

VOLUME: ANY VOLUME
SPEED: ANY SPEED