

### GENERAL NOTES

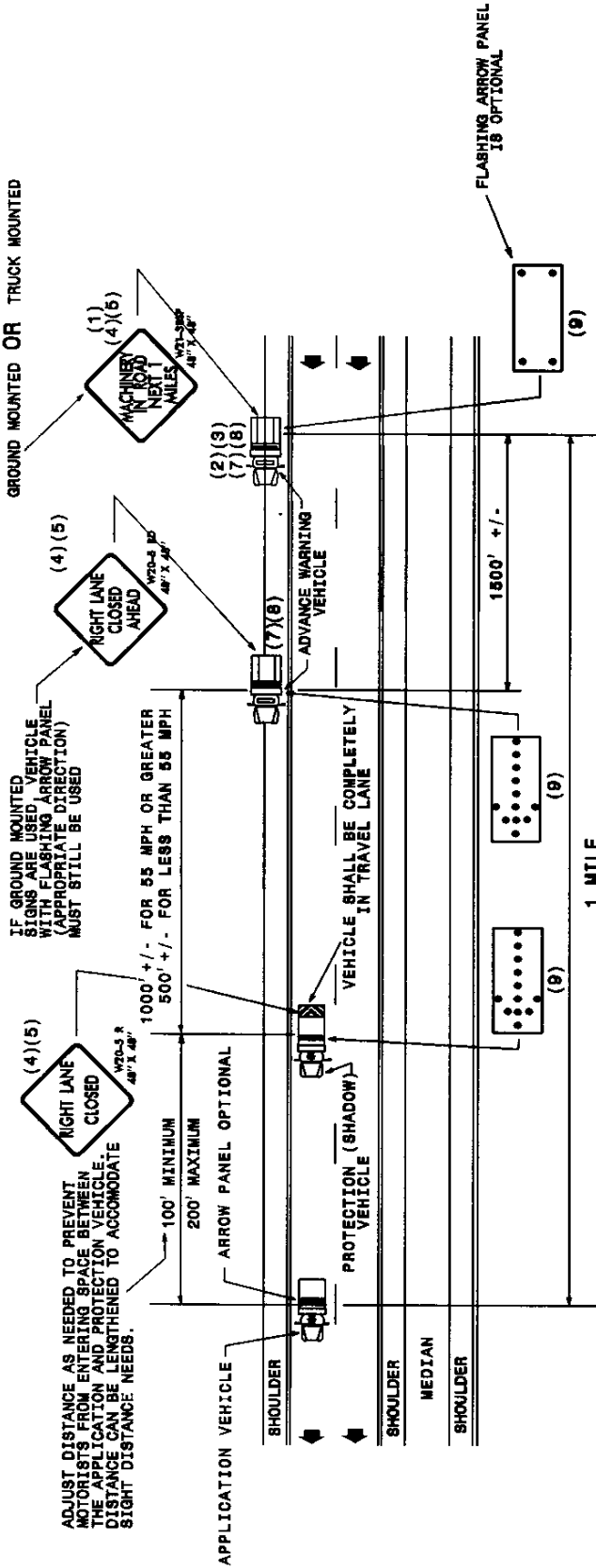
- (1) THE FOLLOWING OPTIONS MAY BE USED AS THE FIRST ADVANCE WARNING THE MOTORISTS SEE:
  - A. TRUCK MOUNTED ADVANCE WARNING SIGNS
  - B. MOVING CHANGEABLE MESSAGE SIGN (CMS)
  - C. GROUND MOUNTED ADVANCE WARNING SIGNS (MUST USE 'NEXT 10 MILES' AND MAKE CIRCLE TO PICK UP SIGNS)
  - D. STATIONARY CHANGEABLE MESSAGE SIGN (CMS) (MUST USE 'NEXT 10 MILES' AND MAKE CIRCLE TO PICK UP CMS)
- (2) TOTAL DISTANCE BETWEEN FIRST AND LAST VEHICLE IN CARAVAN SHOULD NOT EXCEED ONE (1) MILE IN LENGTH.
- (3) IF USING GROUND MOUNTED ADVANCE WARNING SIGNS OR STATIONARY CMS THE TOTAL DISTANCE BETWEEN THE FIRST ADVANCE WARNING SIGN OR CMS AND APPLICATION VEHICLE SHOULD NOT EXCEED 10 MILES AND SIGN W21-388P SHOULD READ 'MACHINERY IN ROAD NEXT 10 MILES'.
- (4) SIGNS ON VEHICLES SHOULD BE MOUNTED A MINIMUM OF ONE (1) FOOT FROM THE GROUND AND SHOULD NOT BLOCK THE MOTORIST'S SIGHT OF THE FLASHING ARROW PANEL AND/OR LIGHT BAR.

- (5) SIGN W20-4L SHOULD BE PLACED ON BACK OF PROTECTION VEHICLE DIVIDED ROADWAY TO ADVISE TRUCKS AND MULTILANE DIVIDED TRAFFIC SO VEHICLES APPROACHING FROM REAR ARE NOTIFIED OF OPERATION.
- (6) RADIO COMMUNICATION BETWEEN VEHICLES IS RECOMMENDED.
- (7) ALL VEHICLES MUST HAVE BEACONS AND/OR LIGHT BARS OPERATING AT ALL TIMES.
- (8) USE OF CMS'S ARE OPTIONAL WITH ADVANCED WARNING VEHICLES.
- (9) USE A TYPE "B" FLASHING ARROW PANEL.
  - PANEL TYPE MIN. SIZE
  - B 60" X 30"
- (10) A LANE CLOSURE MAY BE USED IN THE EVENT THE ENGINEER FEELS VEHICLES MOUNTED (OR BEING USED) ON THE ROADWAY OR HIGHWAY STANDARD DRAWING AND/OR SHEET OF 4 OF THE PAVEMENT MANAGEMENT OPERATIONS FOR LANE CLOSURE SET UP'S.

### LEGEND

	PORTABLE SIGN
	DIRECTION OF TRAFFIC FLOW
	APPLICATION VEHICLE WITH ROTATING BEACON
	PROTECTION VEHICLE WITH TRUCK AND ROTATING BEACON (SEE STANDARD NO. 1188-01)
	ADVANCE WARNING VEHICLE WITH MOUNTED SIGN
	PICKUP TRUCK WITH MOUNTED SIGN
	FLASHING ARROW PANEL, TYPE "B"
	FLASHING ARROW PANEL, TYPE "B" APPROPRIATE DIRECTION INDICATED

MAY BE SIGNS OR CMS AND EITHER GROUND MOUNTED OR TRUCK MOUNTED



# PAVEMENT MANAGEMENT OPERATIONS

(OPERATIONS STOPPED 0-15 MIN.)

## INTERSTATE & MULTILANE DIVIDED ROADWAYS

DRAWING NUMBER 2 OF 4  
 IMPLEMENTATION DATE: 02-01-02  
 REVISION DATE: 01-14-02