

GENERAL NOTES

- (1) LANE CLOSURES SHALL BE INSTALLED WITH THE TRAFFIC FLOW BEGINNING WITH DEVICES ON THE UPSTREAM SIDE OF TRAFFIC. LANE CLOSURES SHALL BE REMOVED AGAINST THE TRAFFIC FLOW, BEGINNING WITH DEVICES ON THE DOWNSTREAM SIDE OF TRAFFIC.
- (2) THE MAXIMUM SPACING OF CONES THRU THE WORK AREA SHALL BE EQUAL IN FEET TO 2 TIMES THE POSTED SPEED LIMIT.
- (3) LANE CLOSURES SHALL BE EXTENDED AT THE BUFFER SPACE SUCH THAT STOPPING SIGHT DISTANCE IS PROVIDED TO THE FLAGGER. (REFER TO STD. DWG. 1101.11-SHEET 2)
- (4) TRAFFIC SHOULD NOT BE STOPPED IN ANY ONE DIRECTION FOR MORE THAN 5 MINUTES AT A TIME.
- (5) PILOT CARS SHALL BE USED WHEN DIRECTED BY THE ENGINEER.
- (6) FLAGGERS SHALL BE USED TO CONTROL TRAFFIC AT INTERSECTIONS AFFECTED BY THE LANE CLOSURE. FLAGGERS UTILIZED AT INTERSECTIONS SHALL BE ACCOMPANIED BY FLAGGER AHEAD SIGNS (W20-7a) PLACED APPROXIMATELY 250 FT. IN ADVANCE OF THE FLAGGER WHERE INTERSECTIONS ARE SIGNALIZED. SIGNALS SHOULD BE PLACED IN THE FLASH MODE.
- (7) ALL VEHICLES MUST HAVE BEACONS AND/OR LIGHT BARS OPERATING AT ALL TIMES
- (8) RADIO COMMUNICATION BETWEEN VEHICLES AND/OR FLAGGERS IS RECOMMENDED
- (9) CONES MAY BE OMITTED TO DELINEATE WORK ZONE IF DEEMED UNESSENTIAL BY THE ENGINEER
- (10) USE A TYPE "B" FLASHING ARROW PANEL
 PANEL TYPE MIN SIZE
 60" x 30"
- (11) SIGN W-777 TO BE USED IN TWO-LANE, TWO-WAY OPERATIONS ONLY.

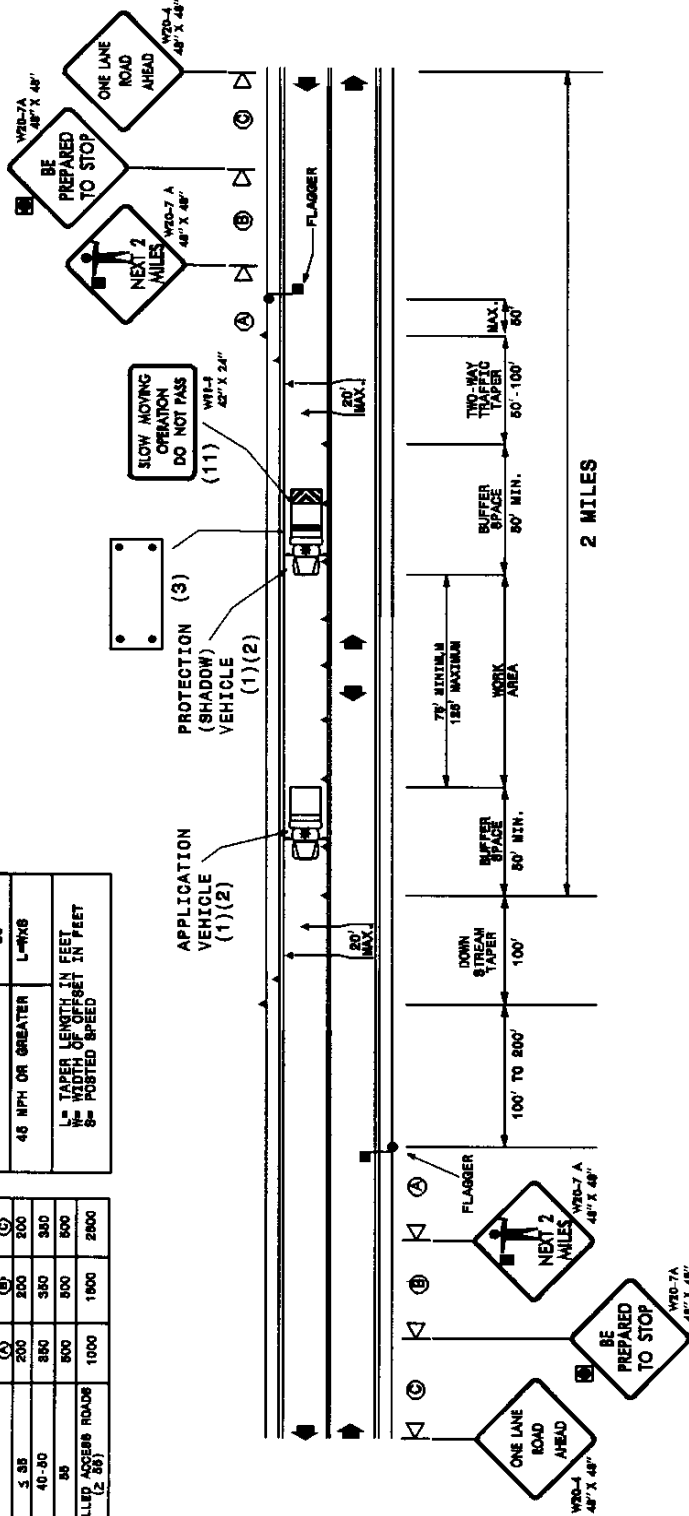
LEGEND

- PORTABLE SIGN
- DIRECTION OF TRAFFIC FLOW
- TYPE B WARNING LIGHT (FOR NIGHT USE)
- APPLICATION VEHICLE WITH ROTATING BEACON
- PROTECTION VEHICLE WITH TRUCK MOUNTED LIGHTS AND ROTATING BEACON (SEE ROADWAY STANDARD NO. 1168.01)
- FLASHING ARROW PANEL, TYPE "B"
- CONE
- FLAGGER

POSTED SPEED (MPH)	ADVANCE WARNING SIGN SPACING CHART	FORMULA
40 MPH OR LESS	100' (1)	$L = \frac{W^2}{8S}$
45 MPH OR GREATER	200' (2)	$L = \frac{W^2}{8S}$
55	300	
60	350	
65	400	
70	450	
75	500	
80	550	
85	600	
90	650	
95	700	
100	750	
105	800	
110	850	
115	900	
120	950	
125	1000	
130	1050	
135	1100	
140	1150	
145	1200	
150	1250	
155	1300	
160	1350	
165	1400	
170	1450	
175	1500	
180	1550	
185	1600	
190	1650	
195	1700	
200	1750	
205	1800	
210	1850	
215	1900	
220	1950	
225	2000	
230	2050	
235	2100	
240	2150	
245	2200	
250	2250	
255	2300	
260	2350	
265	2400	
270	2450	
275	2500	
280	2550	
285	2600	
290	2650	
295	2700	
300	2750	
305	2800	
310	2850	
315	2900	
320	2950	
325	3000	
330	3050	
335	3100	
340	3150	
345	3200	
350	3250	
355	3300	
360	3350	
365	3400	
370	3450	
375	3500	
380	3550	
385	3600	
390	3650	
395	3700	
400	3750	
405	3800	
410	3850	
415	3900	
420	3950	
425	4000	
430	4050	
435	4100	
440	4150	
445	4200	
450	4250	
455	4300	
460	4350	
465	4400	
470	4450	
475	4500	
480	4550	
485	4600	

POSTED SPEED (MPH)	ADVANCE WARNING SIGN SPACING CHART	FORMULA
40 MPH OR LESS	100' (1)	$L = \frac{W^2}{8S}$
45 MPH OR GREATER	200' (2)	$L = \frac{W^2}{8S}$
55	300	
60	350	
65	400	
70	450	
75	500	
80	550	
85	600	
90	650	
95	700	
100	750	
105	800	
110	850	
115	900	
120	950	
125	1000	
130	1050	
135	1100	
140	1150	
145	1200	
150	1250	
155	1300	
160	1350	
165	1400	
170	1450	
175	1500	
180	1550	
185	1600	
190	1650	
195	1700	
200	1750	
205	1800	
210	1850	
215	1900	
220	1950	
225	2000	
230	2050	
235	2100	
240	2150	
245	2200	
250	2250	
255	2300	
260	2350	
265	2400	
270	2450	
275	2500	
280	2550	
285	2600	
290	2650	
295	2700	
300	2750	
305	2800	
310	2850	
315	2900	
320	2950	
325	3000	
330	3050	
335	3100	
340	3150	
345	3200	
350	3250	
355	3300	
360	3350	
365	3400	
370	3450	
375	3500	
380	3550	
385	3600	
390	3650	
395	3700	
400	3750	
405	3800	
410	3850	
415	3900	
420	3950	
425	4000	
430	4050	
435	4100	
440	4150	
445	4200	
450	4250	
455	4300	
460	4350	
465	4400	
470	4450	
475	4500	
480	4550	
485	4600	

POSTED SPEED (MPH)	BUFFER SPACE (FT)
20	35
25	45
30	55
35	65
40	75
45	85
50	95
55	105
60	115
65	125
70	135
75	145
80	155
85	165
90	175
95	185
100	195
105	205
110	215
115	225
120	235
125	245
130	255
135	265
140	275
145	285
150	295
155	305
160	315
165	325
170	335
175	345
180	355
185	365
190	375
195	385
200	395
205	405
210	415
215	425
220	435
225	445
230	455
235	465
240	475
245	485



PAVEMENT MANAGEMENT OPERATIONS
 (OPERATIONS STOPPED 15 MIN. OR LONGER)
TWO-LANE, TWO-WAY ROADWAYS