

GENERAL NOTES

(1) THE FOLLOWING OPTIONS MAY BE USED AS THE FIRST ADVANCE WARNING TO THE MOTORIST'S SEES:

- A. TRUCK MOUNTED ADVANCE WARNING SIGNS
- B. MOVING CHANGEABLE MESSAGE SIGN (CMS)
- C. GROUND MOUNTED ADVANCE WARNING SIGNS (MUST BE NEXT TO MILES AND MAKE CIRCLE TO PICK UP SIGNS)
- D. STATIONARY CHANGEABLE MESSAGE SIGN (CMS) (MUST BE NEXT TO MILES AND MAKE CIRCLE TO PICK UP CMS)

(2) TOTAL DISTANCE BETWEEN FIRST AND LAST VEHICLE IN CARAVAN SHOULD BE APPROXIMATELY ONE (1) MILE IN LENGTH.

(3) IF USING GROUND MOUNTED ADVANCE WARNING SIGNS OR STATIONARY CMS, THE TOTAL DISTANCE BETWEEN THE FIRST ADVANCE WARNING SIGN OR CMS AND APPLICATION VEHICLE SHOULD NOT EXCEED 10 MILES AND SIGN W21-3BSP SHOULD READ 'MACHINERY IN ROAD NEXT 10 MILES'.

(4) SIGNS ON VEHICLES SHOULD BE MOUNTED A MINIMUM OF ONE (1) FOOT FROM THE GROUND AND SHOULD NOT BLOCK THE MOTORIST'S SIGHT OF THE FLASHING ARROW PANEL AND/OR LIGHT BAR.

(5) SIGN W20-5L SHOULD BE PLACED ON BACK OF PROTECTION VEHICLE AND SIGN W20-5D ON BACK OF ADVANCE WARNING VEHICLE IN MULTILANE DIVIDED TRAFFIC SO VEHICLES APPROACHING FROM REAR ARE NOTIFIED OF OPERATION

(6) RADIO COMMUNICATION BETWEEN VEHICLES IS RECOMMENDED.

(7) USE A LIGHT BAR OR ROTATING BEACON ON THE ADVANCE WARNING VEHICLES.

(8) USE OF CMS'S ARE OPTIONAL WITH ADVANCED WARNING VEHICLES.

(9) USE A TYPE "B" FLASHING ARROW PANEL.

PANEL TYPE MIN. SIZE
 B 60"X30"

LEGEND

PORTABLE SIGN

DIRECTION OF TRAFFIC FLOW

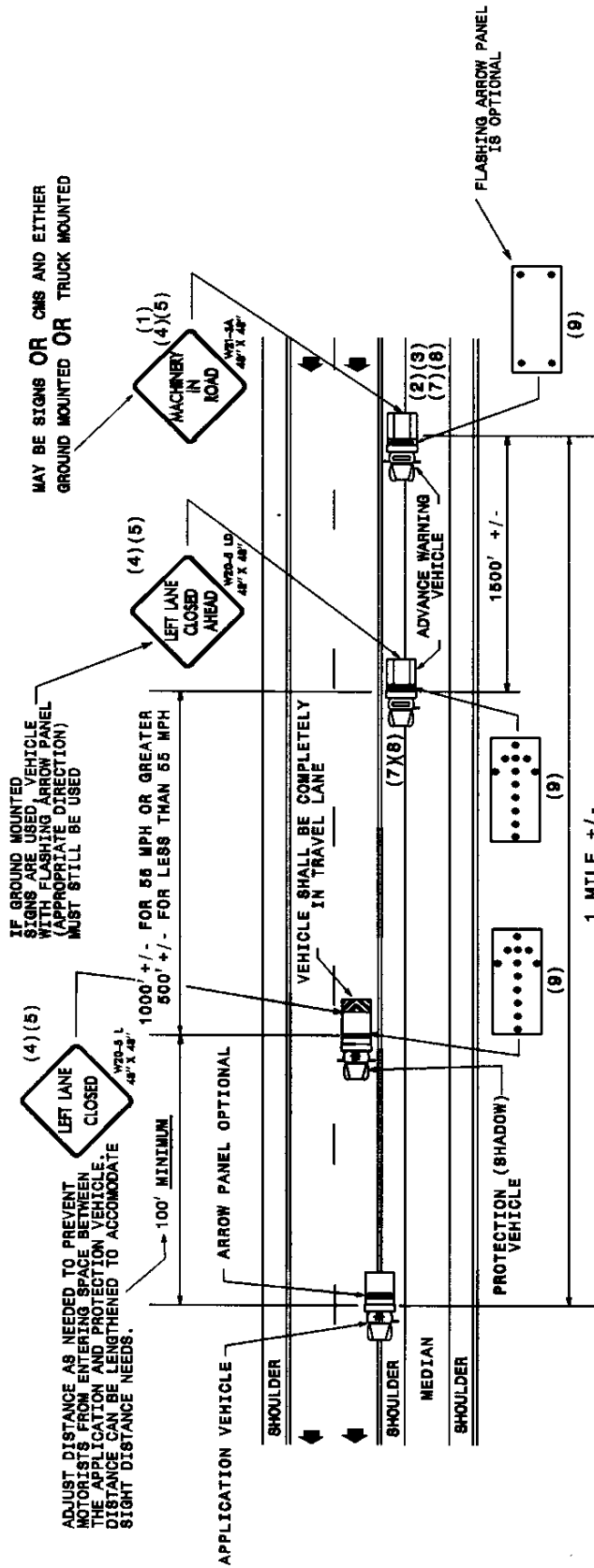
APPLICATION VEHICLE WITH ROTATING BEACON

PROTECTION VEHICLE WITH TRUCK MOUNTED LIGHT ATTENUATOR (TMLA) AND ROTATING BEACON (SEE ROADWAY STANDARD NO. 1163.01)

ADVANCE WARNING VEHICLE WITH PICKUP TRUCK WITH MOUNTED SIGN

FLASHING ARROW PANEL, TYPE "B"

FLASHING ARROW PANEL, TYPE "B" APPROPRIATE DIRECTION INDICATED



MOVING OPERATION CARAVAN

(OPERATIONS TRAVELING 3 MPH OR FASTER)

SPRAYING INTERSTATE & HIGH VOLUME MULTILANE DIVIDED ROADWAYS
 IN MEDIAN AND ON RIGHT SIDE W/PAVED SHOULDERS LESS THAN 10' WIDE

DRAWING NUMBER 1
 IMPLEMENTATION DATE: 02/27/97
 REVISED: 07/29/02