







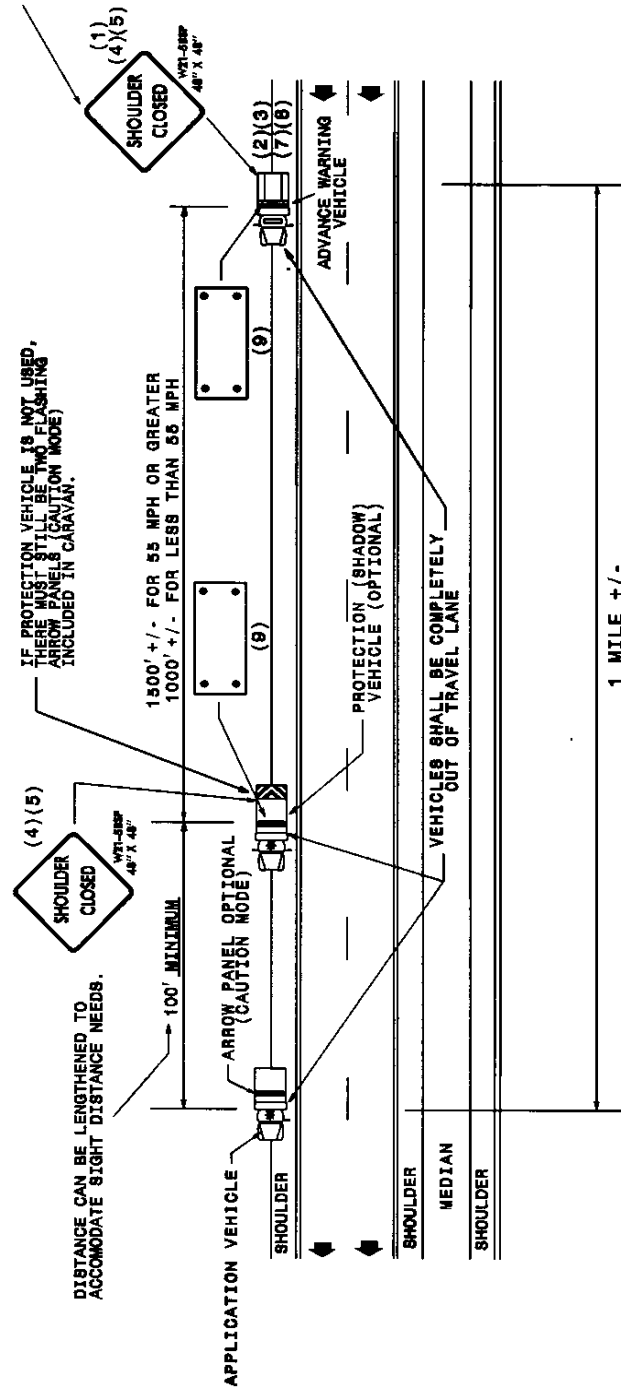
GENERAL NOTES

- (1) THE FOLLOWING OPTIONS MAY BE USED FOR THE FIRST ADVANCE WARNING THE MOTORIST SEES:
 - A. TRUCK MOUNTED ADVANCE WARNING SIGNS
 - B. MOVING CHANGEABLE MESSAGE SIGN (CMS)
 - C. GROUND MOUNTED ADVANCE WARNING SIGNS (MUST USE 'NEXT 10 MILES' AND MAKE CIRCLE TO PICK UP SIGNS)
 - D. STATIONARY CHANGEABLE MESSAGE SIGN (CMS) (MUST USE 'NEXT 10 MILES' AND MAKE CIRCLE TO PICK UP CMS)
- (2) TOTAL DISTANCE BETWEEN FIRST AND LAST VEHICLE IN CARAVAN SHOULD BE APPROXIMATELY ONE (1) MILE IN LENGTH.
- (3) IF USING GROUND MOUNTED ADVANCE WARNING SIGNS OR STATIONARY CMS, THE TOTAL DISTANCE BETWEEN THE FIRST ADVANCE WARNING SIGN OR CMS AND APPLICATION VEHICLE SHOULD NOT EXCEED 10 MILES AND SIGN W21-5CSP SHOULD READ 'SHOULDER CLOSED NEXT 10 MILES'.
- (4) SIGNS ON VEHICLES SHOULD BE MOUNTED A MINIMUM OF ONE (1) FOOT FROM THE GROUND AND SHOULD NOT BLOCK THE MOTORIST'S SIGHT OF THE FLASHING ARROW PANEL AND/OR LIGHT BAR.

PANEL TYPE	MIN. SIZE
B	60"X30"

LEGEND

-  PORTABLE SIGN
-  DIRECTION OF TRAFFIC FLOW
-  APPLICATION VEHICLE WITH ROTATING BEACON
-  PROTECTION VEHICLE WITH TRUCK MOUNTED ARROW PANEL (TMAP) AND ROTATING BEACON (SEE ROADWAY STANDARD NO. 1188.01)
-  ADVANCE WARNING VEHICLE
-  FLASHING ARROW PANEL, TYPE "B"



MAY BE SIGNS OR CMS BUT CAN ONLY BE GROUND MOUNTED IF ADVANCE WARNING VEHICLE WITH FLASHING ARROW PANEL IS ADDED BETWEEN ADVANCE WARNING SIGN AND PROTECTION VEHICLE

MOVING OPERATION CARAVAN
 (OPERATIONS TRAVELING 3 MPH OR FASTER)
SPRAYING INTERSTATE & HIGH VOLUME MULTILANE DIVIDED ROADWAYS IN MEDIAN AND ON RIGHT SIDE W/PAVED SHOULDERS 10' OR WIDER