





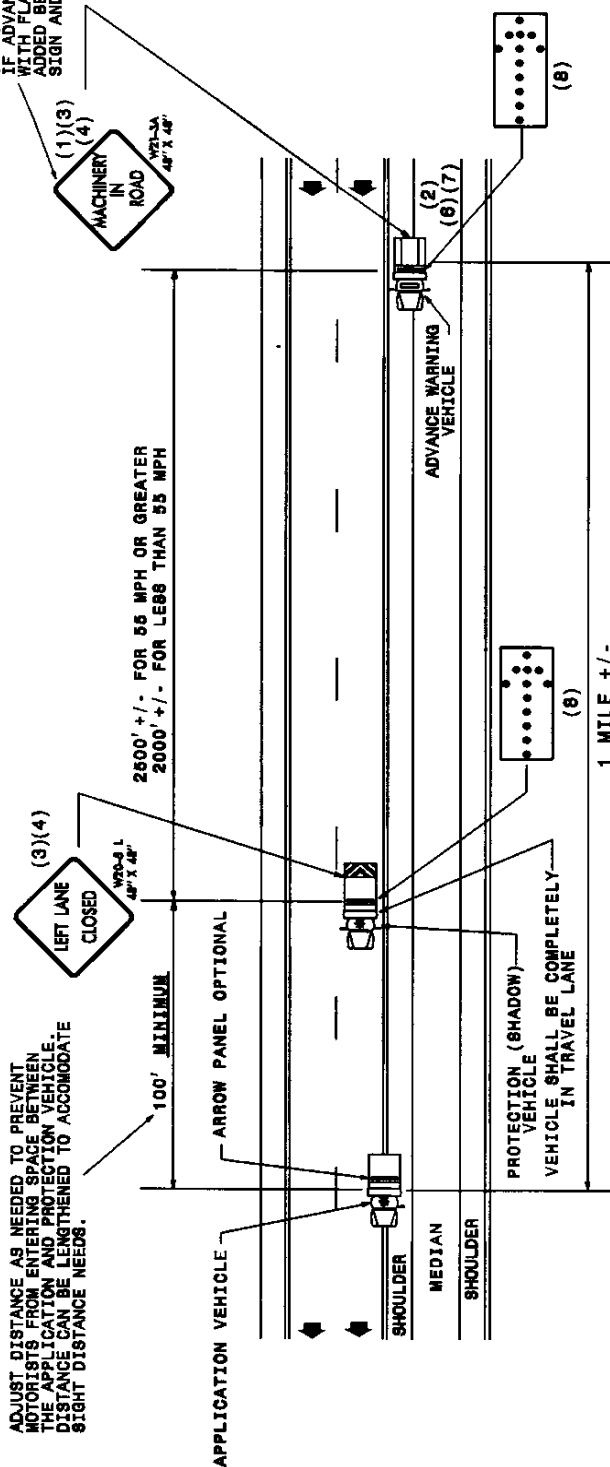
GENERAL NOTES

- (1) THE FOLLOWING OPTIONS MAY BE USED AS THE FIRST ADVANCE WARNING THE MOTORISTS SEE:
 - A. TRUCK MOUNTED ADVANCE WARNING SIGNS
 - B. MOVING CHANGEABLE MESSAGE SIGN (CMS)
- (2) TOTAL DISTANCE BETWEEN FIRST AND LAST VEHICLE IN CARAVAN SHOULD BE APPROXIMATELY ONE (1) MILE IN LENGTH.
- (3) SIGNS ON VEHICLES SHOULD BE MOUNTED A MINIMUM OF ONE (1) FOOT FROM THE GROUND AND SHOULD NOT BLOCK THE MOTORIST'S SIGHT OF THE FLASHING ARROW PANEL AND/OR LIGHT BAR.
- (4) SIGN W20-L SHOULD BE PLACED ON BACK OF PROTECTION VEHICLE AND SIGN W21-SBSF ON BACK OF ADVANCE WARNING VEHICLE IN MULTILANE DIVIDED TRAFFIC ROAD VEHICLES APPROACHING FROM REAR ARE NOTIFIED OF OPERATION.

- ### LEGEND
- K PORTABLE SIGN
 - ➔ DIRECTION OF TRAFFIC FLOW
 -  APPLICATION VEHICLE WITH ROTATING BEACON
 -  PROTECTION VEHICLE WITH TRUCK MOUNTED IMPACT ATTENUATION (TMA) STANDARD NO. 110(8.01)
 -  ADVANCE WARNING VEHICLE WITH "B" SIGN
 -  FLASHING ARROW PANEL TYPE "B" APPROPRIATE DIRECTION INDICATED

PANEL TYPE	MIN. SIZE
B	60"X30"

MAY BE SIGNS OR CMS BUT CAN ONLY BE GROUND MOUNTED IF ADVANCE WARNING VEHICLE WITH FLASHING ARROW PANEL IS ADDED BETWEEN ADVANCE WARNING SIGN AND PROTECTION VEHICLE



MOVING OPERATION CARAVAN

(OPERATIONS TRAVELING 3 MPH OR FASTER)

SPRAYING OTHER MULTILANE DIVIDED ROADWAYS

IN MEDIAN AND ON RIGHT SIDE W/PAVED SHOULDERS LESS THAN 10' WIDE

DRAWING NUMBER 3
IMPLEMENTATION DATE: 07/01/97
REVISED: 07/26/02