

GENERAL NOTES

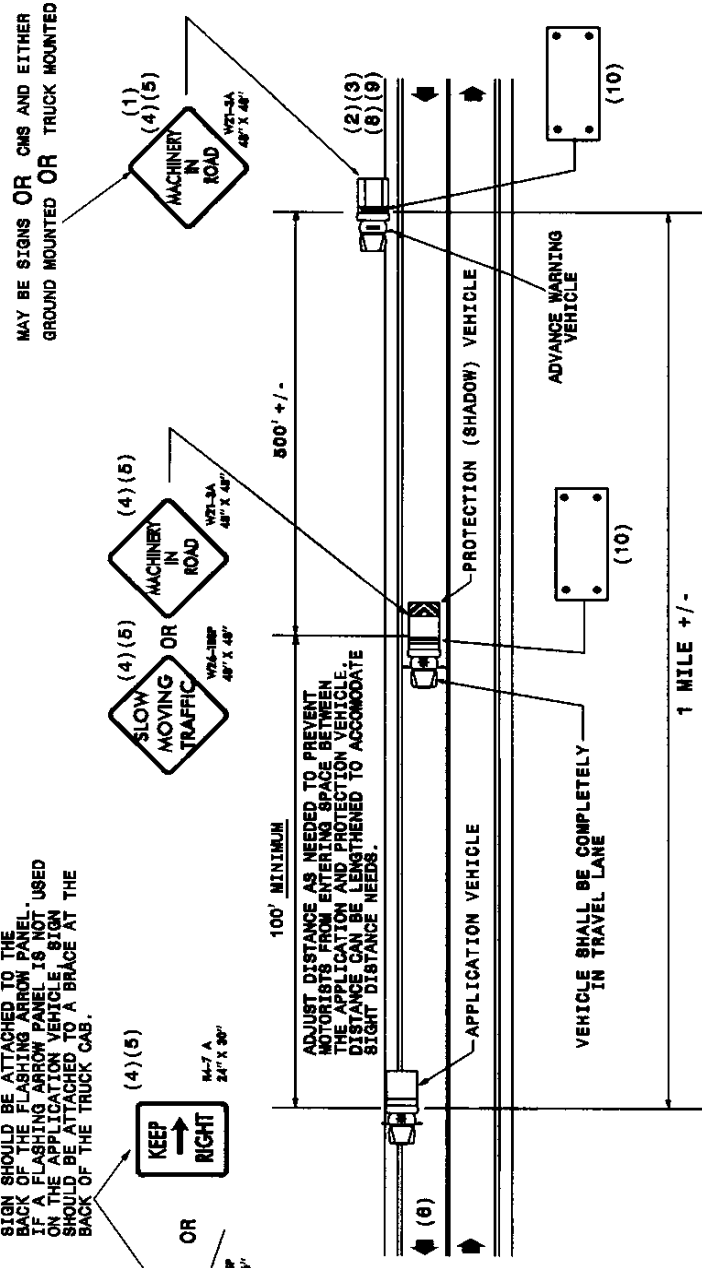
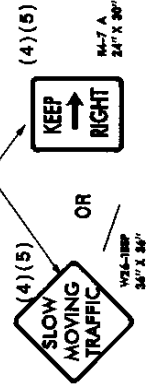
- (1) THE FOLLOWING OPTIONS MAY BE USED AS THE FIRST ADVANCE WARNING TO THE MOTORISTS SEE:
 - A. TRUCK MOUNTED ADVANCE WARNING SIGNS
 - B. MOVING CHANGEABLE MESSAGE SIGN (CMS)
 - C. GROUND MOUNTED ADVANCE WARNING SIGNS (MUST USE "NEXT 10 MILES" AND MAKE CIRCLE TO PICK UP SIGNS)
 - D. STATIONARY CHANGEABLE MESSAGE SIGN (CMS) (MUST USE "NEXT 10 MILES" AND MAKE CIRCLE TO PICK UP CMS)
- (2) TOTAL DISTANCE BETWEEN FIRST AND LAST VEHICLE IN CARAVAN SHOULD BE APPROXIMATELY ONE (1) MILE IN LENGTH.
- (3) IF USING GROUND MOUNTED ADVANCE WARNING SIGNS OR STATIONARY CMS, THE TOTAL DISTANCE BETWEEN THE FIRST ADVANCE WARNING SIGN OR CMS AND APPLICATION VEHICLE SHOULD NOT EXCEED 10 MILES AND SIGN W21-3BSP SHOULD READ "MACHINERY IN ROAD NEXT 10 MILES".
- (4) SIGNS ON VEHICLES SHOULD BE MOUNTED A MINIMUM OF ONE (1) FOOT FROM THE GROUND AND SHOULD NOT BLOCK THE MOTORIST'S SIGHT OF THE FLASHING ARROW PANEL AND/OR LIGHT BAR.
- (5) SIGN W26-1BSPOR R4-7A SHOULD BE PLACED ON FRONT OF THE APPLICATION VEHICLE AND SIGN W26-1BSPOR W21-3A ON BACK OF THE PROTECTION VEHICLE IN TWO-LANE TWO-WAY TRAFFIC SO VEHICLE APPROACHING FROM THE FRONT AND REAR ARE NOTIFIED OF OPERATION.
- (6) IF A LEAD VEHICLE IS ADDED TO OPERATION, IT SHOULD HAVE THE SAME ADVANCE WARNING SIGNS AS THE APPLICATION VEHICLE SHOWN BELOW.
- (7) RADIO COMMUNICATION BETWEEN VEHICLES IS RECOMMENDED.
- (8) USE A LIGHT BAR OR ROTATING BEACON ON THE ADVANCE WARNING VEHICLES.
- (9) USE OF CMS'S ARE OPTIONAL WITH ADVANCED WARNING VEHICLES.
- (10) USE A TYPE "B" FLASHING ARROW PANEL.

PANEL TYPE	MIN. SIZE
B	60"X30"

LEGEND

- PORTABLE SIGN
- DIRECTION OF TRAFFIC FLOW
- APPLICATION VEHICLE WITH ROTATING BEACON
- PROTECTION VEHICLE WITH TRUCK MOUNTED IMPACT ATTENUATOR (TMA) AND ROTATING BEACON (SEE ROADWAY STANDARD NO. 1168.01)
- ADVANCE WARNING VEHICLE PICKUP TRUCK WITH MOUNTED SIGN
- FLASHING ARROW PANEL, TYPE "B"

SIGN SHOULD BE ATTACHED TO THE BACK OF THE FLASHING ARROW PANEL. IF A FLASHING ARROW PANEL IS NOT ON THE APPLICATION VEHICLE, SIGN SHOULD BE ATTACHED TO A BRACE AT THE BACK OF THE TRUCK CAB.



MAY BE SIGNS OR CMS AND EITHER GROUND MOUNTED OR TRUCK MOUNTED

ADJUST DISTANCE AS NEEDED TO PREVENT MOTORISTS FROM ENTERING SPACE BETWEEN APPLICATION VEHICLE AND PROTECTION VEHICLE. DISTANCE CAN BE LENGTHENED TO ACCOMMODATE SIGHT DISTANCE NEEDS.

VEHICLE SHALL BE COMPLETELY IN TRAVEL LANE

MOVING OPERATION CARAVAN

(OPERATIONS TRAVELING 3 MPH OR FASTER)

SPRAYING TWO-LANE TWO-WAY ROADWAYS WITH ADT GREATER THAN 5000