

## Text Messages from your cell phone

Email short messages, reminders, phone numbers and other important stuff to any mobile phone that supports text (SMS) messaging. Check with your mobile carrier regarding the charges for text messaging under your plan, of course!

1. Create a new email message.
2. In the "To" text box, enter the cell phone number using the following syntax:

`10-ddigitnumber@carrierdomain.com`

Here is a list of some major carrier domains:

Alltel	@message.alltel.com
Cingular/ AT&T	@txt.att.net
Nextel	@messaging.nextel.com
Sprint	@messaging.sprintpcs.com
T-Mobile	@tmomail.net
VoiceStream	@voicestream.net
Verizon	@vtext.com
Virgin Mobile	@vmobl.com

3. Create a message of 160 characters or less. You can also attach a .jpg file, if the cell phone you are sending to supports images.
4. Send the email.

## Match Element Symbolology with the ALT key in V8i

Pressing the Alt key then left clicking on an element will change the active symbology to the element selected. Even after a command has been started for example place line. By pressing the ALT key and then selecting an element on the screen the line that is being placed will change symbology.



## this issue

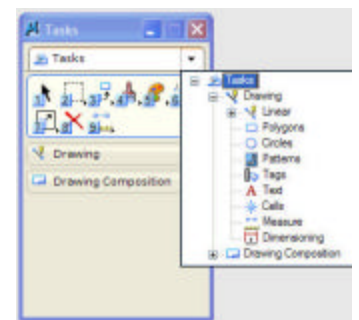
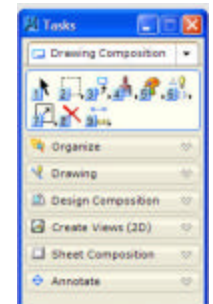
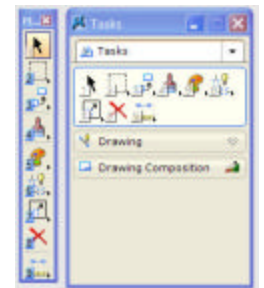
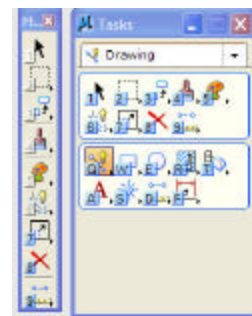
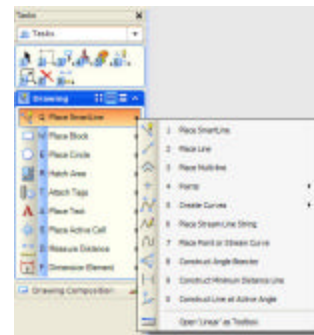
- MicroStation V8i **P.1**
- Pattern Line Solutions **P.2**
- Pattern Line Placement **P.3**
- Last Word **P.4**

## Exploring MicroStation V8i .

Change is coming. Just when you thought you knew everything you wanted to about MicroStation V8 a new version rears it's ugly head. The New Version of MicroStation is known as V8i. CADD Services is planning on starting to roll out V8i this summer most likely starting in August.

The last time the NCDOT changed versions of MicroStation was about 4 years ago when we upgraded from MicroStation Version 7 to MicroStation V8. Which went pretty well if memory serves. This Upgrade will be a bit more involved because we are not just jumping one version but two. Shortly after we finished our last upgrade to V8 Bentley released MicroStation XM. Since we had just finished an upgrade and because at the time none of our GEOPAK products support XM we decided not to worry about it. But with the release of MicroStation V8i and new powerful additions to GEOPAK V8i we decided the time was right to get up to date.

So what will be different? The interface for one thing. With the XM edition of MicroStation Bentley changed the interface of the program from the current "motif" based version to a more modern "task" based interface. What does that mean for the user? While all the commands work pretty much like they use to they may be found in a bit different place. In other words Bentley moved things around on some menus and created several new "menu displays. For example the old command menu looked like the one on the left while the new interface could look like any of the images on the right depending on how you the user wants it to. Looks interesting doesn't it? Stay tuned for more .



## Western Division Training Facilities Still up in the Air

As reported in the previous edition of the CADD News IT West (aka The Western Divisions CADD and PC Training and Support Center) lost it's lease at CVCC on September 30, 2008. When and where IT West will re-locate and re-open is currently up in the air due to the NCDOT's current situation. Until such time please feel free to contact Rande Robinson at 828.466.5526 or 919.357.7740 about CADD issues or David Dietrich at 919.386.9116 for PC training or support issues.

## SOFTWARE Monthly Picks

Ever wanted to take a drawing home from the office to work on? Our maybe you would like to use a CADD program at home to do a bit of landscaping or remodeling. Now thanks to Pangaea Cad Solutions you can download the Freeware CAD Application—DualCAD for your own use. Here is the description from Pangaea Website:



DualCAD is a 100% Microstation editor developed by Pangaea Cad Solutions. DualCAD will edit or redline both V7 and V8 Microstation files. DualCAD handles resource files, truetype fonts and user defined linestyles. You can also attach both raster and reference files to your drawing. You can create clip regions for the reference files, scale, rotate and move them. You can create cell libraries and add cells to them. DualCAD also has built in macro language based on QBasic. QBasic is about as simple as a programming language can get so people with no programming experience can still create useful macros. Create your next project using DualCAD and be confident that both Microstation and AutoCAD users will be able to call up your drawings without any problems.

If you would like to download Dualcad and give it a try give it a try the URL is:

<http://www.pcscad.com/index.html>



## Unmatched XS Cell and XS Pattern Line from Horizontal Alignment Shift

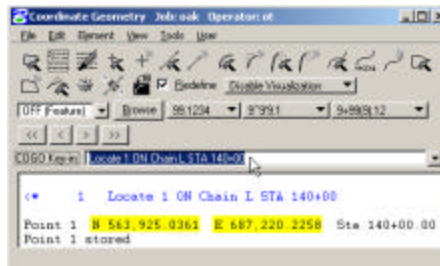
**Question:** I have been using these files for the past 2 months and now when I try to run the criteria file because of an adjustment on det3rev, I get a message:

"No matching XS Cells found for given XS Pattern Lines"

Criteria seems to stop working. Why?

**Answer:** The error normally occurs when the horizontal alignment has changed or shifted since the existing ground cross sections were initially cut. Particularly, the baseline horizontal XY coordinates stored in the GPK file do not match what are drawn in the XSC file. For example, in this situation, there was an alignment shift for -L- (XS baseline) instead of just the revised detour horizontal alignment. Chain -L- at station 140+00;

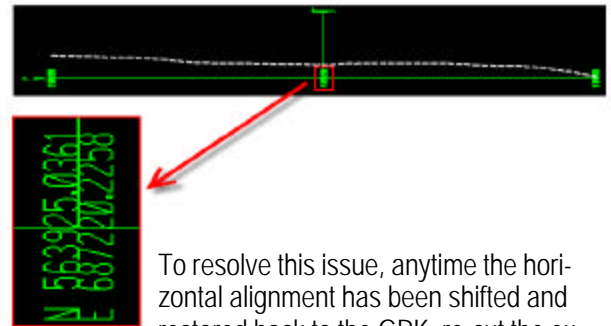
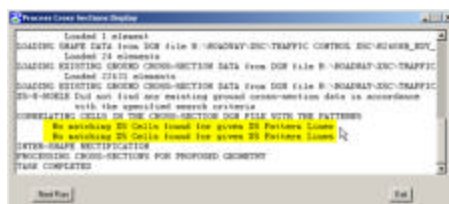
GPK  
N 563,925.0361  
E 687,220.2258



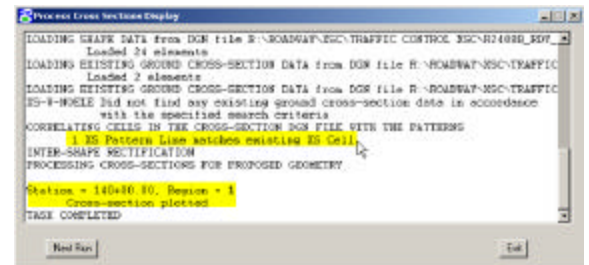
N 563,925.5917  
E 687,219.9906

XSC  
N 563,922.5917  
E 687,219.9906

When Criteria tries to match the two coordinates, an error will occur and the process comes to a halt.



To resolve this issue, anytime the horizontal alignment has been shifted and restored back to the GPK, re-cut the existing ground cross section in the XSC first. Then run Criteria for the proposed template on the updated chain location.



Note that this error can occur when processing Criteria cross sections "by pattern lines" or "by stations". The above situation is from cutting cross sections "by stations". It makes no difference and has the same effect.

Thanks to Oak Thammavong

For more questions and answers check out the Roadway Q&A forum at

<http://www.ncdot.org/doh/preconstruct/highway/roadway/QA/>



## How to get CADD Training

With each new version of software comes the never ending activity of learning how the program's great new features work and which old ones don't. The introduction of MicroStation V8 and its associated programs are no exception.

The additions of unlimited named levels, models and a slew of user interface enhancements can make one's first attempt to use V8 a bit over whelming. If you need training for a new employee or feel you need a refresher course in any of our CADD products, all you need to do is go to the CADD Support Website at:

<http://www.ncdot.org/~cadd>

Then select Training from the main menu. From the Training page download and fill out the CADD request Training form and mail the form to:

**Steve Brown**  
**Engineering Application Services**  
**1597 Mail Service Center**  
**Raleigh, NC 27699-1597**

CADD Services will get you into the next available class provided there is no waiting list.

Remember that it is not necessary to continue to fill out requests if a request is on record. If in doubt email Steve at [sbrown@ncdot.gov](mailto:sbrown@ncdot.gov)

Also, when making a request, **check off all the classes that you wish to take. (i.e. It's not necessary to complete Microstation before you can request GEOPAK).** Once we receive and enter a request our database keeps up with them.

## Where to draw Pattern lines

<http://www.ncdot.org/doh/preconstruct/highway/roadway/index/patternlines/patternlines.pdf>

1. Draw pattern lines by station range: even 50' sta. increments or as determined by the project situation. Then create the following additional cross-section pattern lines.
  2. All pavement transition points. Basically any place the pavement widens, narrows, tapers in or out or has a width transition.
  3. Retaining walls: at begin, end, angle and transition points.
  4. Horizontal control points: ST, TS, PT, PC etc.
  5. Centerline of Box culverts or large streams.
  6. Bridge ends
  7. Ends of radius at intersections: at both -L- and -Y- lines.
  8. -L- line and ramp gore areas (cross section perpendicular to both).
- After the additional cross sections pattern lines have been placed the station range should be evaluated for proximity to the additional pattern lines. If the station range pattern line is within 10' +/- of an additional pattern line, then the station range pattern line may be eliminated. The additional pattern line info should always take preference. These guidelines and recommendations of the location where cross sections should be cut on a project to provide the minimum information necessary to produce a surface model and or a proposed TIN of the design.

### Pattern Line Notes:

GEOPAK does not handle intersecting pattern lines. MicroStation smart match can be used to help draw pattern lines anywhere in a drawing as long as they intersect the alignment but not another pattern line. Don't forget that there is a difference between pattern lines drawn as lines or smartlines.

## This Month's Q&A MicroStation Tips

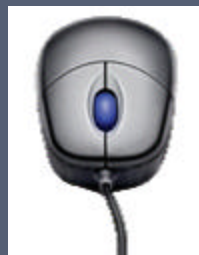
### Q: Ever wonder what the MicroStation High Security option is on the Start Menu?

A: The High Security option sets a MicroStation-variable that allows only products that are digitally signed by Bentley to be loaded on top of MicroStation. If you are not using any third party products, then the High Security option would be okay. If you are then you may want to set the security level under Workspace Configuration. For NCDOT work just use regular MicroStation.

### Q: What is View Independent Text?

A: View Independent Text will stay normal to your view even if you rotate the view display. This type of text is handy when placing text call outs for benchmarks and power pole numbers

that need to be legible even when the plan and profile sheets are rotated.



### Rock Plating Cell Update

Per GEU request, the Roadway cell library (Roadway Workspace) has been updated with the modified 4 rock plating detail cells. These modifications include:

1. Minor drafting refinements.
2. Labels rock plating material as either "2' THICK CLASS 1 OR 2 RIPRAP", designated in the Geotechnical Recommendation Letter when applicable.

These updated rock plating cells are now a Project Services provision. If you have any questions pertaining to rock plating, please contact Scott Hidden in GEU.





## File Check

Unsure if the DGN files in your folder are V8 or MicroStation J? One way to find out is in V8 Microstation Manager, before opening a DGN file, the 'Show File Icons' can be selected to show which DGN files are V8 and those that are Microstation J.

V8 files will have V8 Icon.

Microstation J files will have the Bentley Logo Icon.

## CADD News

Issue 01 Volume 09  
May 2009



NCDOT  
Information Technology  
Engineering Technology Systems  
Engineering Applications Service  
CADD Services

<http://www.ncdot.org/~cadd>

Century Center Complex Bldg. A  
1597 Mail Service Center  
Raleigh, NC 27699-1597

Phone: 919.250.4249  
Fax: 919.212.3072

IT West / co: Bridge Maintenance  
1296 Prison Camp Road  
Newton, 28658  
Phone: 828.466.5526 or  
919.357.7740  
Fax: 828.466.5579

## AccuSnap Tip

One of the best ways to deal with AccuSnap is to hold down shift+control keys, this will enable or disable AccuSnap. For example, if AccuSnap is turned/toggled "ON" holding down shift+control key will disable AccuSnap. If AccuSnap is toggled/turned "OFF" shift+control key will enable AccuSnap.

## Fun Fact

Construction on the Empire State Building started on St. Patrick's Day, March 17, 1930. Two other New York projects were fighting for the title of the world's tallest building (the 40 Wall Street and the Chrysler Building). After just 410 days of construction the Empire State Building won out at 1,454 feet.

## Last Word—29 lines to make you smile

1. Most people want to serve God, but only in an advisory position.
2. I don't suffer from insanity; I enjoy every minute of it.
3. Some people are alive only because it's illegal to kill them.
4. I used to have a handle on life, but it broke.
5. Don't take life too seriously; No one gets out alive.
6. You're just jealous because the voices only talk to me
7. Beauty is in the eye of the beer holder.
8. Earth is the insane asylum for the universe.
9. I'm not a complete idiot -- Some parts are just missing.
10. Out of my mind. Back in five minutes.
11. NyQuil, the stuffy, sneezy, why-the-heck-is-the-room-spinning medicine.
12. God must love stupid people; He made so many.
13. The gene pool could use a little chlorine.
14. Consciousness: That annoying time between naps.
15. Ever stop to think, and forget to start again?
16. Being 'over the hill' is much better than being under it!
17. Wrinkled Was Not One of the Things I Wanted to Be When I Grew up.
18. Procrastinate Now!
19. I Have a Degree in Liberal Arts; Do You Want Fries With That?
20. A hangover is the wrath of grapes.
21. A journey of a thousand miles begins with a cash advance.
22. Stupidity is not a handicap. Park elsewhere!
23. They call it PMS because Mad Cow Disease was already taken.
24. He who dies with the most toys is nonetheless DEAD.
25. A picture is worth a thousand words, but it uses up three thousand times the memory.
26. Ham and eggs...A day's work for a chicken, a lifetime commitment for a pig.
27. The trouble with life is there's no background music .
28. The original point and click interface was a Smith & Wesson.
29. I smile because I don't know what the hell is going on.